

# 2024-2026 DREAM CASTING

---

THE VERY REV. BERNARD J. OWENS

MAY 26, 2024

# TRINITY CATHEDRAL'S CORE VALUES

---

- Integrity
- Dignity
- Faithfulness
- Continuity
- Transcendence

# MISSION & VISION 2021

---

With an expansive and inclusive welcome, Trinity is committed to the love, justice, and mercy at the heart of the Christian faith.

The **mission** of Trinity Cathedral is to proclaim in word and action God's justice, love and mercy for all creation.

Trinity Cathedral's **Vision** is to be *A Sacred Place for All People*



# PROJECT SCOPE SUB-COMMITTEE

---

Jeff Spiess, Senior Warden

Paul Herrgesell

Toni Ponzio

Marilyn Valencia

Dean Owens

# I. COMMUNITY & PASTORAL ENGAGEMENT IN CLEVELAND

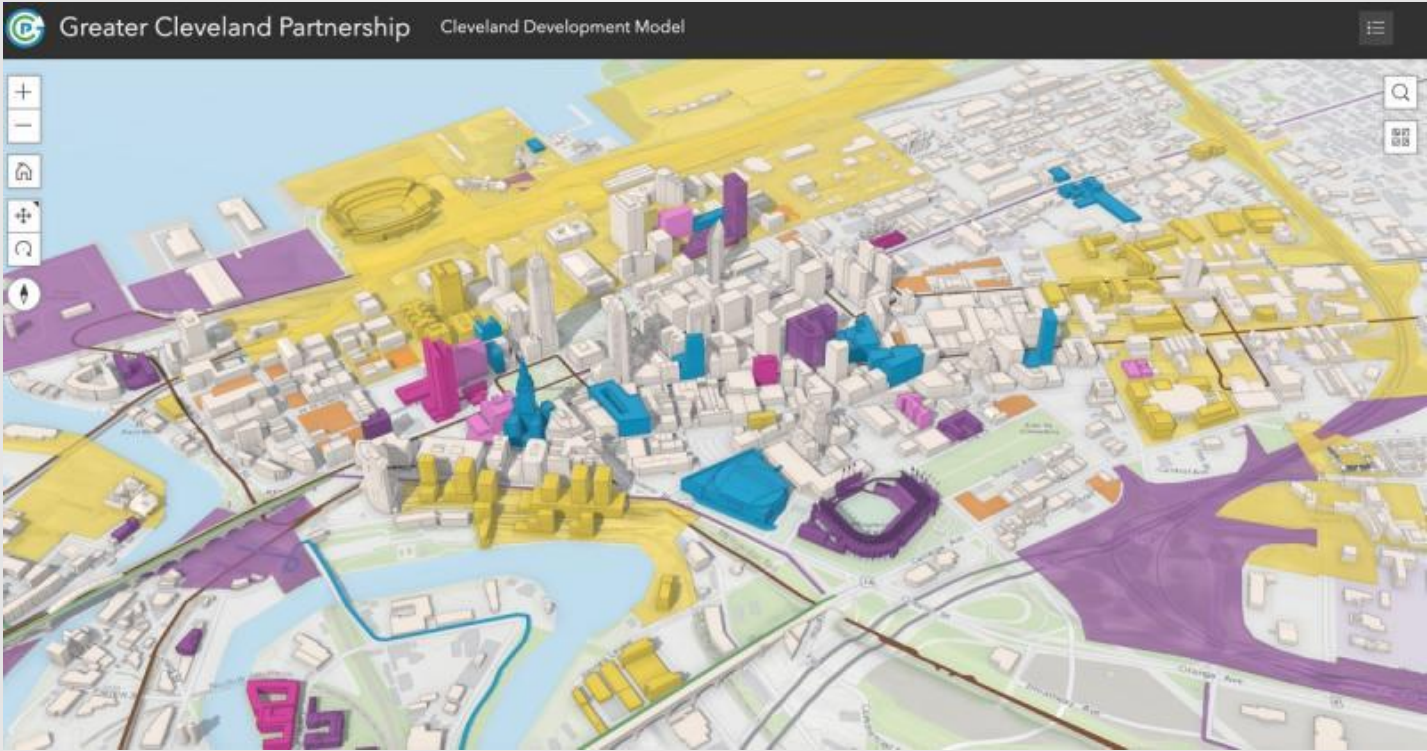
---

1. Community & Pastoral **Engagement** in Cleveland
2. **Spaces** for transcendent liturgy and vibrant programs
3. **Connecting** our Story to past and future generations



# I. COMMUNITY ENGAGEMENT AND PASTORAL CARE IN CLEVELAND AND NORTHEAST OHIO

---



# GROW LOCAL CATHEDRAL COMMUNITY THROUGH 3-YEAR ENGAGEMENT CAMPAIGN

---

- Local-Focus
- Engagement and Relationship-building with downtown and vicinity neighborhoods
- Grow participation throughout the week, including Sundays



# MATHER HALL DISCERNMENT PROCESS

---



- Feasibility study with the Diocese of Ohio
- Requirements:
  - Commission Study
  - Development
  - Shared vision with Bishop Jolly & the Diocese of Ohio



# EXPLORE TRINITY'S FEEDING MINISTRY: WHAT IS THE NEED TODAY?

---

- APATT is nearing 40 years of ministry; what are the greatest needs?
- Where can we have the most impact?
- Can we move towards *ministry with* rather than *ministry for*?



## 2. SPACES FOR TRANSCENDENT LITURGY AND VIBRANT PROGRAMS

---

- Commission Liturgical Platform
- Cathedral Hall
- The Chapter Room
- Access to Columbarium
- Stained Glass & Masonry
- Everyday Spaces
- Liturgical Vestments
- Curate Our History
- Landscaping/Sacred Garden
- Life Cycle Updates



# COMMISSION A LITURGICAL PLATFORM

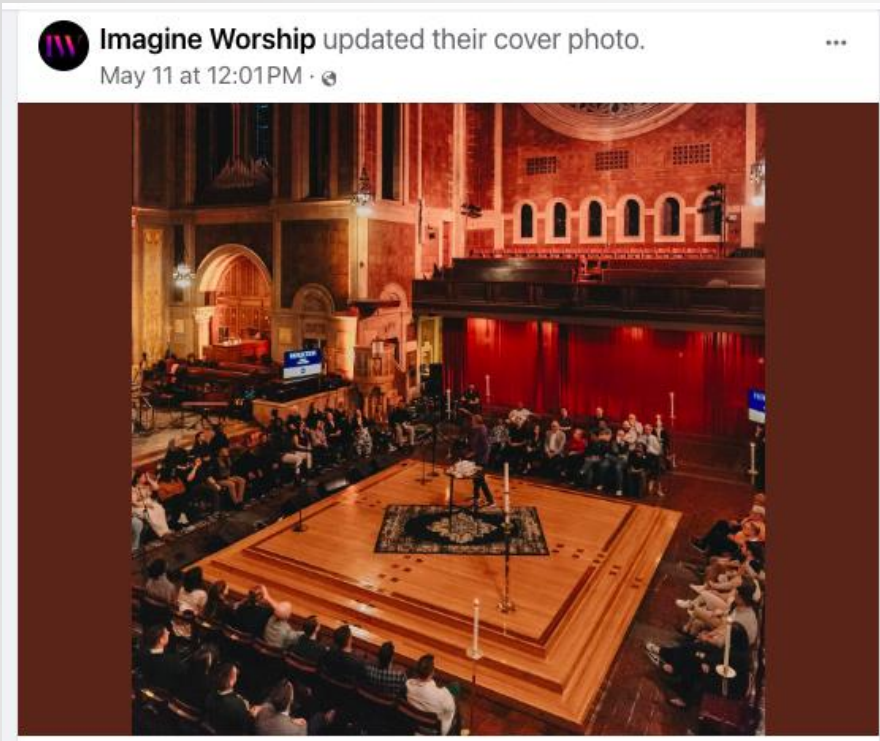
---

- Transforms the worship space
- Beauty & Visibility
- Cohesive with Architecture
- Upgrade cathedral lighting in the cathedral following addition of platform

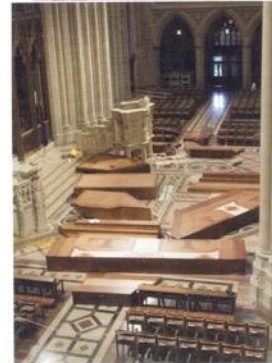




# COMMISSION A LITURGICAL PLATFORM



*Portable Crossing Platform Matches the Original Design in the Stone Floor Beneath*



*Manufactured in 14 Sections at the New Holland Facility and Assembled On Site at the National Cathedral*



*President Ford Lies in State with President Bush in the Background*



*5 Wood Species with Specialized Inlays*



*European Beech  
Black Walnut  
Hard Maple  
Quartered White Oak  
Cherry*





# CATHEDRAL HALL

---

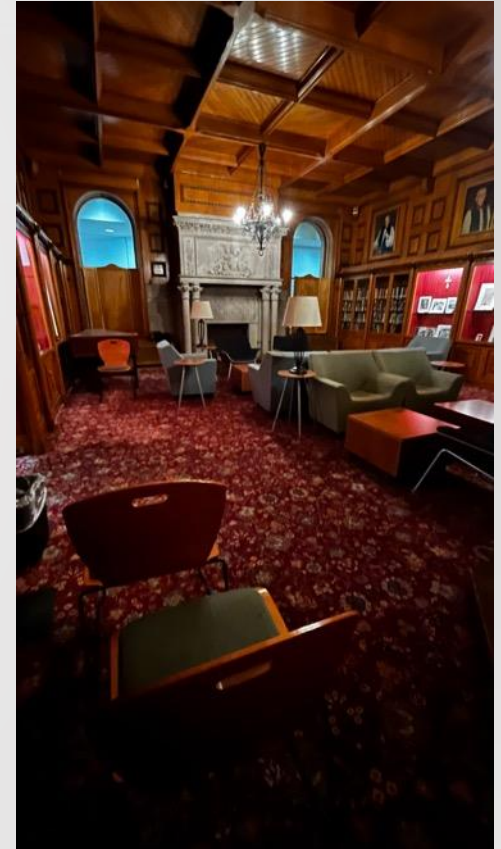
- Renovate into a beautiful and functional space.
- Year-round programming, worship, and gathering.
- Requirements



# THE CHAPTER ROOM

---

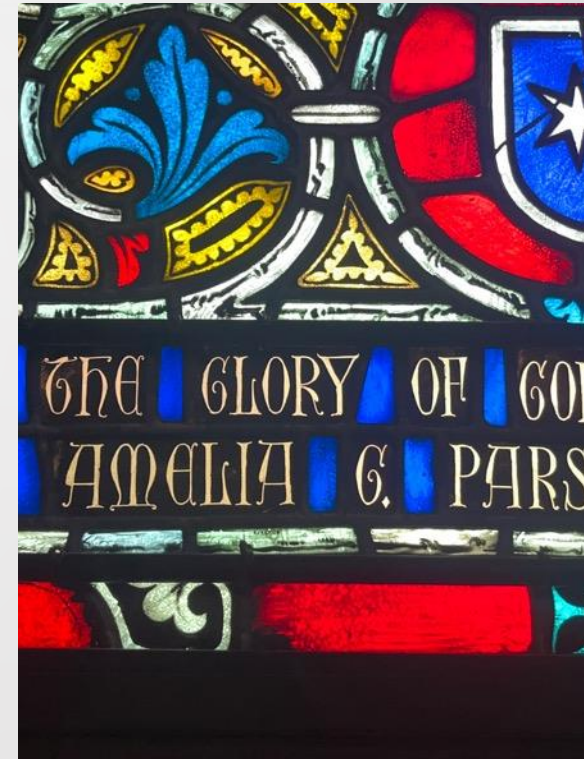
- We've "outgrown" the portrait hall!
- Renovate to increase functionality while respecting history:
  - Reimagine a quiet study and usable space
  - Maintain Historic Feel while adding modern functionality
  - Lighting & Furniture



# STAINED GLASS & MASONRY

---

- Preservation
  - Repair stained glass and masonry that has passed the century mark.
- Commission
  - Commission new window(s)
  - Station Hope? Philadelphia II? Celebration of Creation?





# ACCESS TO COLUMBARIUM

---

- Create an accessibility path via Stairwell 4.
- Possible renovation of connected program space adjacent to stairwell



# IMPROVEMENT TO EVERYDAY SPACES

---

- Choir Room Sound
- Commons A/V
- Commons carpeting

# LIFE CYCLE UPDATES

---

- Geothermal & Heat Pumps
- Audit the campus for energy efficiency and opportunities

# LITURGICAL VESTMENTS

---

- Vestments are a part of the drama of the liturgy & the art of the cathedral; like architecture, they tell a story
- Commission and purchase
  - Eucharistic vestments
  - Acolytes
  - Choir



# 3. CONNECT OUR STORY TO PAST AND FUTURE GENERATIONS

---

- Establish a Planned Giving Circle
- Grow the Endowment via Gift Commitments



# PLANNED GIVING

---

- Create a culture of generative philanthropy
- Establish a planned giving circle
- Invite gift commitments: Current, Capital, and Legacy

# INVITE GIFT COMMITMENTS

---

- Current Gifts
- Planned Gifts
- Legacy Funds

# CURATE THE HISTORY OF TRINITY CATHEDRAL

---

- Chronicle the 1967-2000 era.
- Collect materials from the 2000-2025 era.
- Requirements:
  - Funds for historian, staffing, archival system
  - Capital if a physical archive is created

# CONTINUING WORK

---

- Trinity Commons Discernment with Bishop Jolly
- Strengthening the pastoral community of the Trinity Congregation
- A Music Program that excels in multiple voices, and is growing